

**Botsford Road
London, SW20 9NP**

£600,000 Freehold



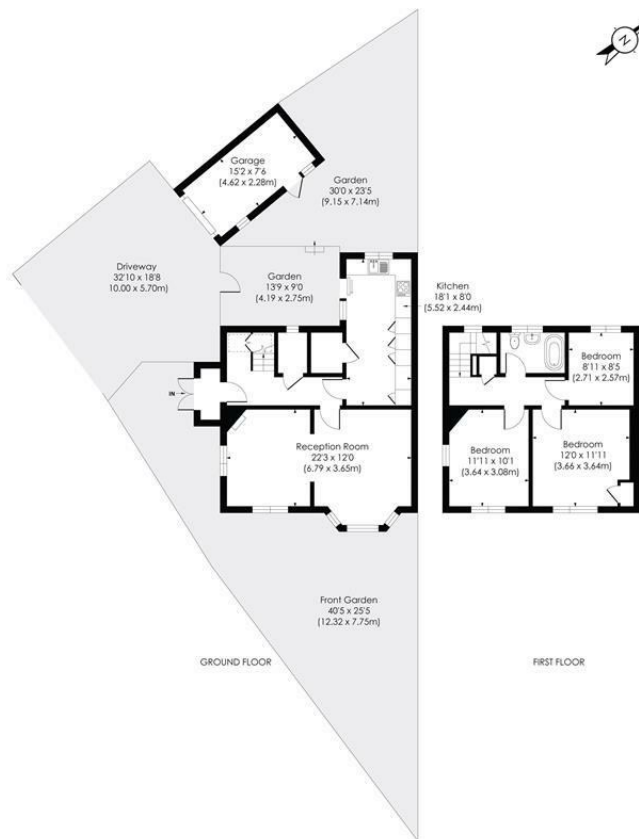
A spacious three double bedroom semi detached house, with great potential to update. Also being situated in a sought after residential road near to the Joseph Hood Primary School. The property further benefits from large lounge, kitchen/diner and garage, parking with several cars and being sold with no onward chain. This is a superb house for any families looking for a home in the area, close to transport links in Wimbledon chase/ Raynes park.

BOTSFORD ROAD, SW20

Approx. Gross Internal Floor Area

1050 Sq. ft/97.57 Sq. m

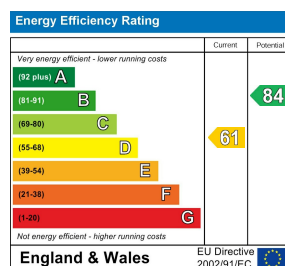
113 Sq. ft/10.53 Sq. m (Garage)



pixangle
PROPERTY MARKETING

This floor plan has been prepared for the purpose of illustration only in accordance with the latest RICS code of measuring practice and is not to scale. All measurements and areas are approximate and whilst every effort has been made to ensure the accuracy of the plan contained here, no responsibility is taken for any error, omission or misstatement.

- Three Double Bedrooms
- Semi Detached
- Close to Wimbledon chase/ Raynes park transport links
- Off Street Parking and garage
- Great potential to update
- No Onward Chain
- EPC Rating : D
- Merton Council Tax Band : D



For Free Mortgage Quote and Best Mortgage Rates, call Ellisons Mortgage Advisor on 0208 543 1166



Although these particulars are believed to be correct, their accuracy is not guaranteed and they do not form part of any contract.

Celebrating 30 years
of successful Sales and
Lettings in Merton

